

# MONTHLY MEMBERSHIP PROGRESS REPORT

LOCATION TENNESSEE

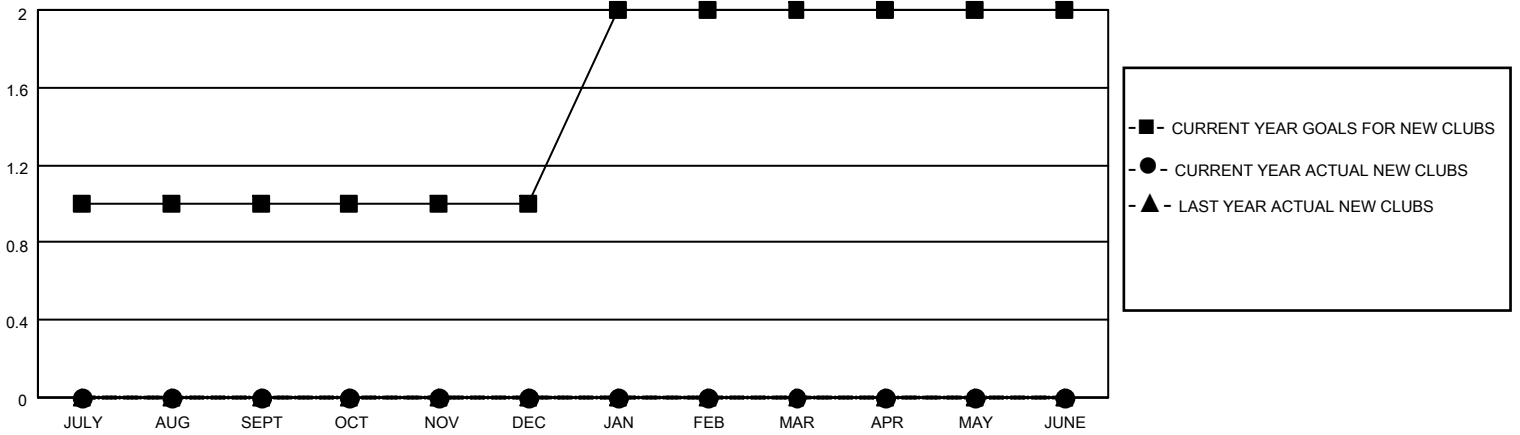
District 12 O

Results as of: 6/30/2023

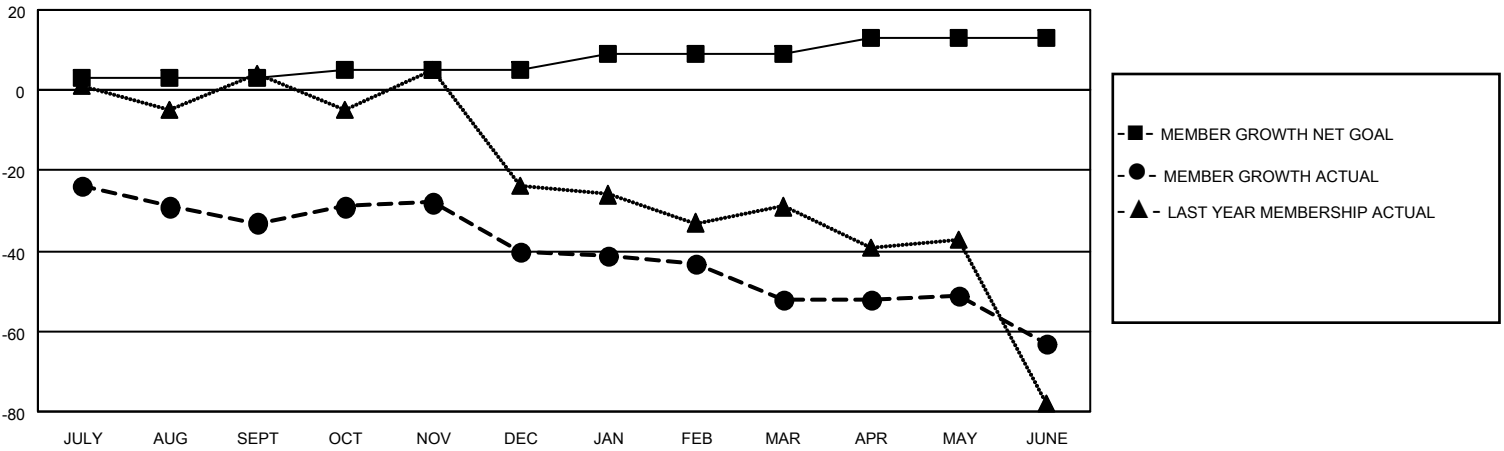
Clubs			
RESULTS FOR 2022-2023			
QUARTER	NEW CLUB GOAL	NEW CLUBS	DROPPED CLUBS
JULY/AUG/SEPT	1	0	0
OCT/NOV/DEC	0	0	0
JAN/FEB/MAR	1	0	1
APR/MAY/JUNE	0	0	0

Members			
RESULTS FOR 2022-2023			
QUARTER	MEMBER GROWTH NET GOAL	MEMBER GROWTH ACTUAL	DROPPED MEMBERS ACTUAL (including transfers)
JULY/AUG/SEPT	3	19	51
OCT/NOV/DEC	2	21	25
JAN/FEB/MAR	4	20	27
APR/MAY/JUNE	4	13	23

**GOALS AND ACTUAL NEW CLUBS CUMULATIVE**



**GOALS AND ACTUAL MEMBERS CUMULATIVE**



<b>DROPPED CLUBS: 1</b>	
<b>DROPPED MEMBERS</b>	
DECEASED	18
CLUB CANCELLED	0
OTHER	108
<b>TOTAL</b>	<b>126</b>

15 CLUBS OF 35 ADDED 1 OR MORE NEW MEMBERS

[CLICK HERE FOR CUMULATIVE MEMBERSHIP DATA](#)

<u>GENDER DISTRIBUTION</u>	
MALE	390 (59.36%)
FEMALE	267 (40.64%)
NON BINARY	0 (0.00%)
PREFER NOT TO ANSWER	0 (0.00%)
<b>TOTAL FAMILY UNIT MEMBERS</b>	<b>177</b>
<b>FAMILY MEMBERS PAYING HALF DUES</b>	<b>89</b>